

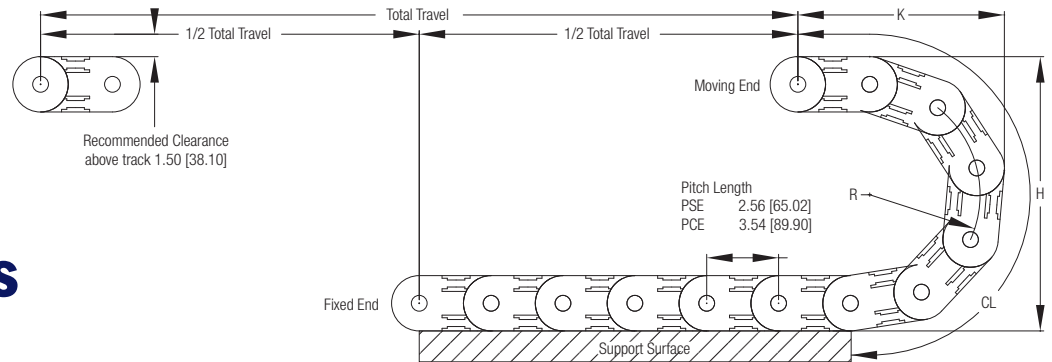


The PCE/PSE Series

The PCE and PSE series are medium size standard enclosed plastic carrier. The extremely durable design and many available options make this an excellent cable carrier for heavy duty and for long travel applications.

Specifications

Standard Mounting bracket arrangement pictured.
Please consult factory for alternative arrangements



Travel/2 + CL (+ Offset Distance From Center*) = Length

* Gortrac recommends mounting the stationary end of the carrier at the center of travel, minimizing the required length. In cases where center mounting is not possible, add the distance offset from center to the carrier length calculation.

Gortrac® Recommends: 10% Cable Clearance
20% Hose Clearance
60% Maximum Fill

How To Create A Part Number: Model # - Height - Number of Separators - Length"

Sample Part #: **PCE150-10-1-72"**

PCE/PSE Series Design Guide

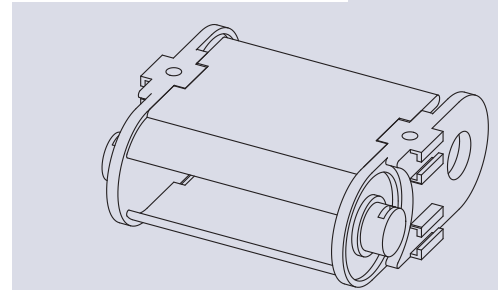
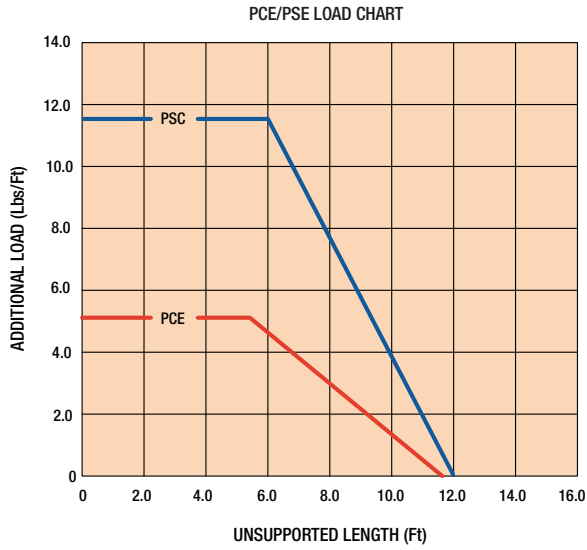
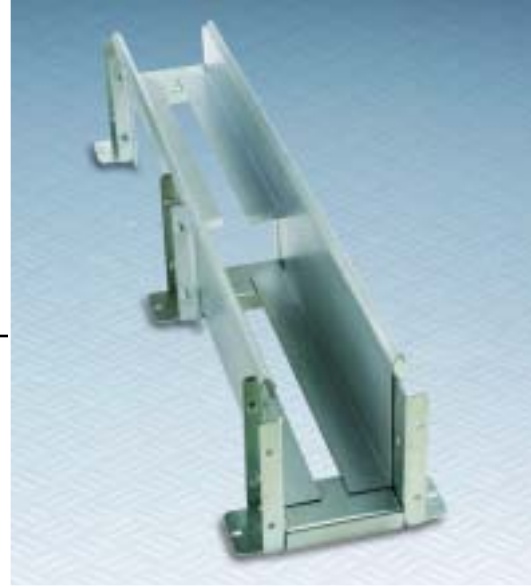
Model#	A INCHES/mm	C INCHES/mm	Q INCHES/mm	Weight #/Ft. KG/m
PCE150	1.50/38.10	3.13/79.50	2.36/59.94	1.20/1.79
PCE350	3.50/88.90	5.13/130.30	4.33/109.98	1.50/2.23
PSE350	3.50/88.90	5.38/136.65	4.41/112.01	1.90/2.83
PSE550	5.50/139.70	7.33/186.18	6.38/162.05	2.00/2.98

	R INCHES/mm	H INCHES/mm	K INCHES/mm	CL INCHES/mm
PCE Height				
10	3.93/99.82	10.00/254.00	7.50/190.50	17.50/444.50
18	7.87/199.90	18.00/457.00	11.40/289.56	29.80/756.92
PSE Height				
15	5.91/150.11	15.00/381.00	10.90/276.86	25.70/652.78
27	11.80/299.72	27.00/685.80	16.80/426.72	44.20/1122.68

Guide Trough

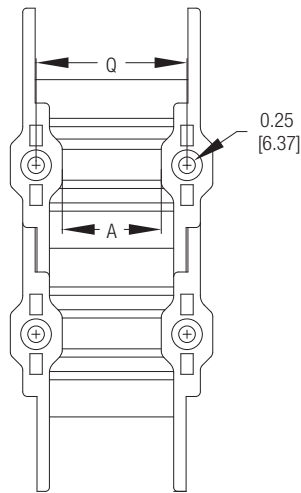
Gortrac® Guide Troughs are an easy, cost-effective method for supporting plastic carrier systems in long travel applications.

- Available from stock
- Fast, easy assembly
- Designed for center mount, offset mount, or opposed travel

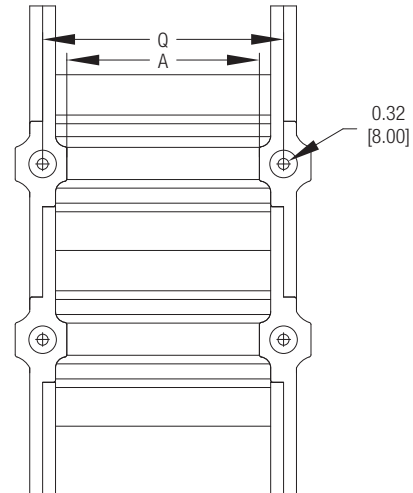


Download CAD drawing at www.gortrac.com

Top View Mounting Hole Dimensions

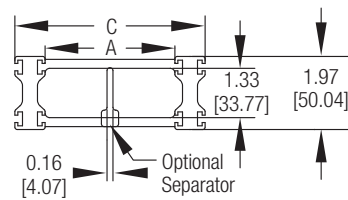


PCE

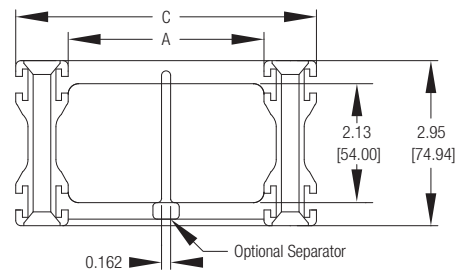


PSE

Carrier Cross Sectional View



PCE



PSE



Armor Plate Options

Aluminum Lids

Armor plate style aluminum lids offer maximum protection against hot chips and heavy debris. Available in both easy access snap-in and heavy-duty bolted construction, armor plate lids are ideal for severe and challenging applications, such as machine tools, mills, and foundries.



Plastic Lids

Plastic lids offer a lightweight, easy access alternative to heavy-duty aluminum armor plates. Available in a wide range of sizes, their aesthetically pleasing look and ease of access make plastic lids an excellent choice for applications where dust and debris are present.

How to Order

Travel/2 + Curve Length (+ Offset Distance From Center*) = Length

* Gortrac recommends mounting the stationary end of the carrier at the center of travel, minimizing the required length. In cases where center mounting is not possible, add the distance offset from center to the carrier length calculation.

Gortrac® Recommends: 10% Cable Clearance
20% Hose Clearance
60% Maximum Fill

How To Create A Part Number: Model # - Bar Width - Height - Number of Separators - Length"

Sample Part #: **TSAP-6"-5.4-1-60"** **TSPL-6"-5.4-1-60"**

1. Determine Gortrac cross section desired. Allow 10% clearance over OD's of enclosed cable and 20% over OD's of hoses to prevent binding.
2. Choose radius (Use manufacturer's suggested cable/hose radius).
3. Determine total track length. See the formula above. If fixed flange is not mounted in center of travel, please send a sketch or drawing.

If Gortrac Part Number is known:

Gortrac Part #: _____

Bracket Information (See Page 7 — Standard arrangement and orientation is 1 + IN)
Please check your **arrangement** and **orientation** selection below:

1 2 3 4 IN OUT

If carrier parameters are known:*

Carrier Radius Preferred: _____

Gortrac Model #: _____

Acceleration: _____ Feet/Sec.² Maximum Machine Travel Speed: _____ Feet/Sec.

Frequency of Travel: _____ Cycles/Hour Total Machine Travel: _____ Inches

Gortrac Length (see the formula above): _____

Cable/Hose Load: _____ Operating Temperature: _____ ° F

Environment: _____

If you are currently using another cable carrier, please specify:*

Model #: _____ Length/# of Links: _____

Contact information:

Date: _____ For Quotation Only: _____

Date Required: _____ Quantity: _____

Order Number: _____

Company Name: _____

Attention: _____

Address: _____

City: _____ State/Prov: _____

Country: _____

Zip/Postal Code: _____

Telephone: _____

Fax: _____

E-Mail: _____

Please fax this completed form to the number listed below.

*More information may be required. A Gortrac representative may contact you.