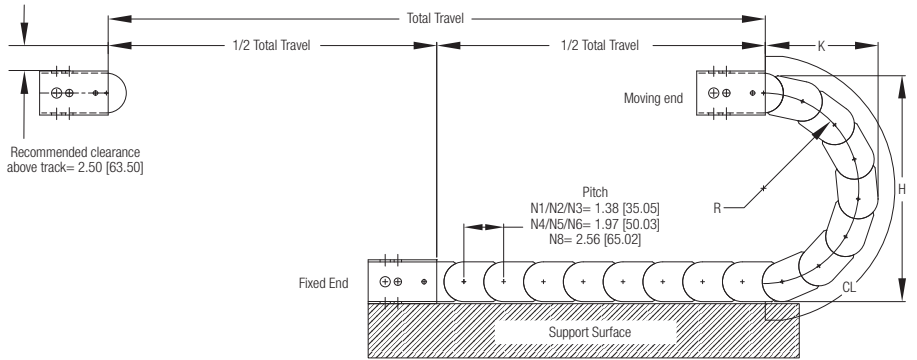


# The N Series

The N series is a small to large size range of standard enclosed plastic carrier. It features a smooth appearance and a solid link design. The N series is excellent for machine tools, wash down applications and industrial applications.

N-3



## Specifications

Standard Mounting bracket arrangement pictured. Please consult factory for alternative arrangements

### Travel/2 + CL (+ Offset Distance From Center\*) = Length

\* Gortrac recommends mounting the stationary end of the carrier at the center of travel, minimizing the required length. In cases where center mounting is not possible, add the distance offset from center to the carrier length calculation.

### Gortrac® Recommends:

10% Cable Clearance  
20% Hose Clearance  
60% Maximum Fill

### How To Create A Part Number: Model # - Height - Length"

Sample Part #: **N4-10-30"**

## N Series Design Guide

Model#	A	B	C	F	D	Weight
	INCHES/mm	INCHES/mm	INCHES/mm	INCHES/mm	INCHES/mm	#/Ft. KG/m
N1	0.90/22.86	0.90/22.86	1.38/35.05	—	1.38/35.05	0.50/0.74
N2	1.34/34.04	0.90/22.86	1.97/50.04	—	1.38/35.05	0.60/0.89
N3-D*	2.48/62.99	0.90/22.86	2.95/74.93	1.18/29.97	1.38/35.05	0.80/1.19
N4	1.42/36.07	1.34/34.04	1.97/50.04	—	1.97/50.04	0.80/1.19
N5	3.39/86.11	1.34/34.04	3.94/100.08	—	1.97/50.04	1.20/1.79
N5-D*	3.39/86.11	1.34/34.04	3.94/100.08	1.63/41.28	1.97/50.04	1.20/1.79
N6-D*	5.352/135.89	1.34/34.04	5.91/150.11	2.62/66.55	1.97/50.04	1.70/2.53
N8	5.28/134.11	2.24/56.90	5.91/150.11	—	2.95/74.93	2.20/3.27

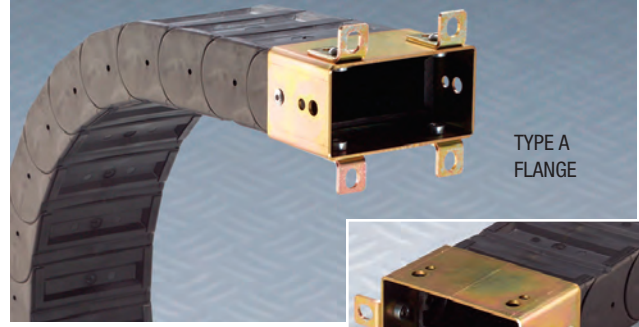
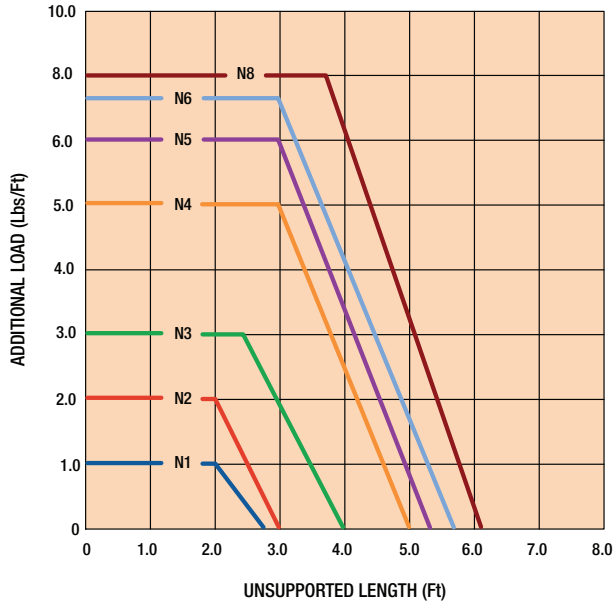
\* Designates divided carrier

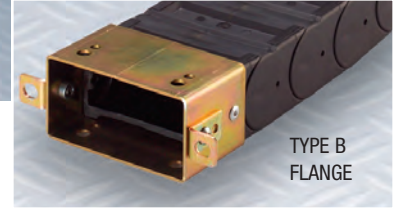
	R	H	K	CL
	INCHES/mm	INCHES/mm	INCHES/mm	INCHES/mm
<b>Height</b>				
<b>N1</b> 8	3.30/83.82	8.00/203.20	5.40/137.16	13.20/335.28
13	5.91/150.11	13.20/335.28	8.00/203.20	21.30/541.02
<b>N2</b> 8	3.30/83.82	8.00/203.20	5.40/137.16	13.20/335.28
13	5.91/150.11	13.20/335.28	8.00/203.20	21.30/541.02
<b>N3</b> 8D*	3.30/83.82	8.00/203.20	5.40/137.16	13.20/335.28
13D*	5.91/150.11	13.20/335.28	8.00/203.20	21.30/541.02
<b>N4</b> 10	3.94/100.08	9.80/248.92	7.00/177.80	16.30/414.02
18	7.87/199.90	17.70/449.58	10.70/271.78	28.70/728.98
<b>N5</b> 10	3.94/100.08	9.80/248.92	7.00/177.80	16.30/414.02
10D*	3.94/100.08	9.80/248.92	7.00/177.80	16.30/414.02
18	7.87/199.90	17.70/449.58	10.70/271.78	28.70/728.98
18D*	7.87/199.90	17.70/449.58	10.70/271.78	28.70/728.98
<b>N6</b> 10D*	3.94/100.08	9.80/248.92	7.00/177.80	16.30/414.02
18D*	7.87/199.90	17.70/449.58	10.70/271.78	28.70/728.98
<b>N8</b> 15	5.91/150.11	14.80/375.92	10.00/254.00	23.70/601.98
27	11.81/299.97	26.60/675.64	15.90/403.86	42.20/1,071.88

\* Designates divided carrier

NYLATUBE LOAD CHART



TYPE A FLANGE

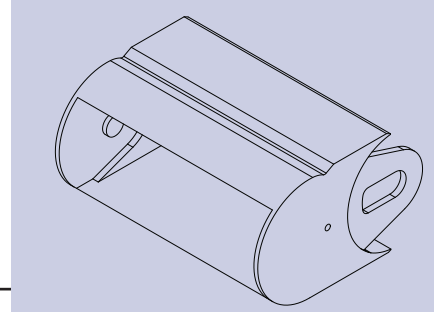


TYPE B FLANGE

### Flange Options

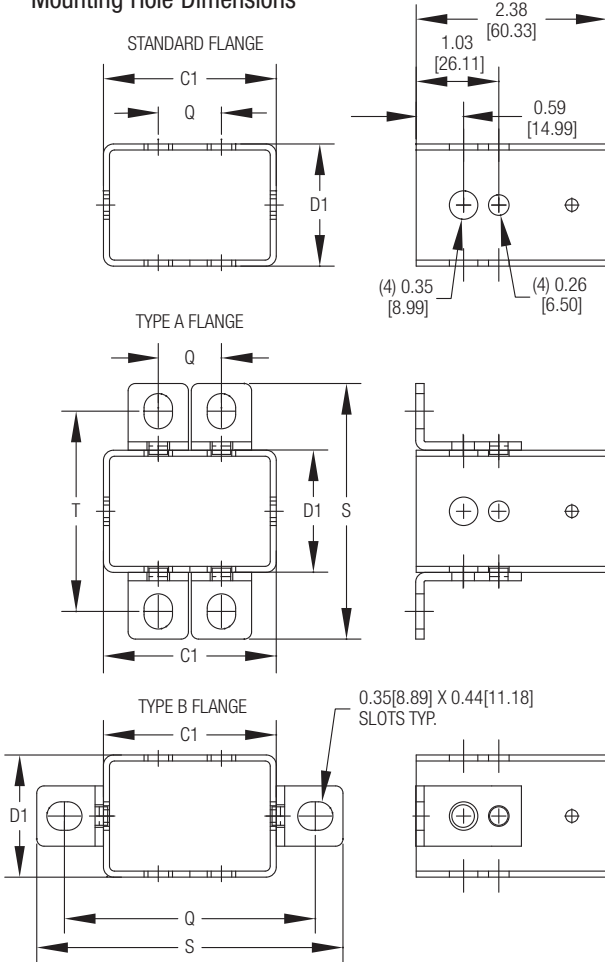
The N-Series is available with three different types of flanges:

- Standard, with no mounting bracket ears
- Type A, with top- and bottom-mounted bracket ears
- Type B, with side-mounted bracket ears



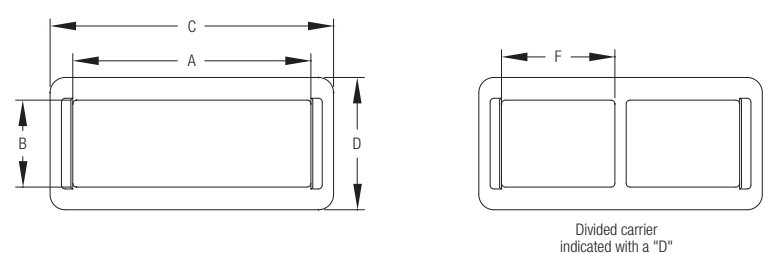
Download CAD drawing at [www.gortrac.com](http://www.gortrac.com)

### Side View Mounting Hole Dimensions



	C1	D1	Q	T	S
	INCHES/mm	INCHES/mm	INCHES/mm	INCHES/mm	INCHES/mm
<b>STANDARD</b>					
N1	1.59/40.39	1.54/39.12	1 HOLE/1 HOLE	—	—
N2	2.13/54.10	1.54/39.12	0.79/20.07	—	—
N3	3.11/78.99	1.54/39.12	1.77/44.96	—	—
N4	2.13/54.10	2.13/54.10	0.79/20.07	—	—
N5	4.09/103.89	2.13/54.10	2.76/70.10	—	—
N6	6.06/153.92	2.13/54.10	4.72/119.89	—	—
N8	6.06/153.92	3.11/78.99	4.72/119.89	—	—
<b>TYPE A</b>					
N1	1.59/40.39	1.54/39.12	1 HOLE/1 HOLE	2.49/63.25	3.18/80.77
N2	2.13/54.10	1.54/39.12	0.79/20.07	2.49/63.25	3.18/80.77
N3	3.11/78.99	1.54/39.12	1.77/44.96	2.49/63.25	3.18/80.77
N4	2.13/54.10	2.13/54.10	0.79/20.07	3.09/78.51	3.78/95.99
N5	4.09/103.89	2.13/54.10	2.76/70.10	3.14/79.81	3.83/97.28
N6	6.06/153.92	2.13/54.10	4.72/119.89	3.14/79.81	3.77/95.83
N8	6.06/153.92	3.11/78.99	4.72/119.89	4.07/103.43	4.76/120.90
<b>TYPE B</b>					
N1	1.59/40.39	1.54/39.12	2.49/63.25	—	3.18/80.77
N2	2.13/54.10	1.54/39.12	3.12/79.25	—	3.81/96.77
N3	3.11/78.99	1.54/39.12	4.14/105.16	—	4.83/122.68
N4	2.13/54.10	2.13/54.10	3.09/78.49	—	3.78/96.01
N5	4.09/103.89	2.13/54.10	5.09/129.29	—	5.78/146.81
N6	6.06/153.92	2.13/54.10	7.04/178.82	—	7.73/196.34
N8	6.06/153.92	3.11/78.99	7.05/179.07	—	7.71/195.83

### Carrier Cross Sectional View

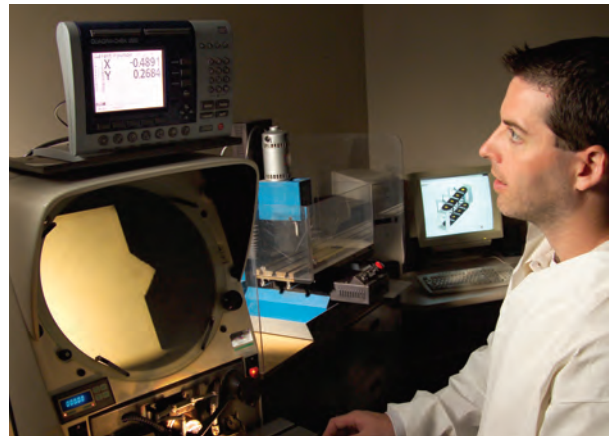




## Research & Development

Gortrac constantly engages in research and development. Our goal is continuous improvement in carrier design and manufacturing. Gortrac engineers and technicians employ various tests and research methods to further their knowledge and expertise:

- Fatigue and life cycle testing
- Destructive testing
- Optical comparison of components
- Rapid prototyping
- Designs for special applications
- Materials research and improvement



## How to Order

### Travel/2 + Curve Length (+ Offset Distance From Center\*) = Length

\* Gortrac recommends mounting the stationary end of the carrier at the center of travel, minimizing the required length. In cases where center mounting is not possible, add the distance offset from center to the carrier length calculation.

**Gortrac® Recommends:** 10% Cable Clearance  
20% Hose Clearance  
60% Maximum Fill

### How To Create A Part Number: Model - Height - Bar Width (PR & AF Style Bars only) - # of Separators - Length"

Sample Part #: **KLE1-10-1-36"**

1. Determine Gortrac cross section desired. Allow 10% clearance over OD's of enclosed cable and 20% over OD's of hoses to prevent binding.
2. Choose radius (Use manufacturer's suggested cable/hose radius).
3. Determine total track length. See the formula above. If fixed flange is not mounted in center of travel, please send a sketch or drawing.

#### If Gortrac Part Number is known:

Gortrac Part #: \_\_\_\_\_

Bracket Information (See Page 7 — Standard arrangement and orientation is 1 + IN)  
Please check your **arrangement** and ..... **orientation** selection below:

1  2  3  4  IN  OUT

#### If carrier parameters are known:\*

Carrier Radius Preferred: \_\_\_\_\_

Gortrac Model #: \_\_\_\_\_

Acceleration: \_\_\_\_\_ Feet/Sec.<sup>2</sup> Maximum Machine Travel Speed: \_\_\_\_\_ Feet/Sec.

Frequency of Travel: \_\_\_\_\_ Cycles/Hour Total Machine Travel: \_\_\_\_\_ Inches

Gortrac Length (see the formula above): \_\_\_\_\_

Cable/Hose Load: \_\_\_\_\_ Operating Temperature: \_\_\_\_\_ ° F

Environment: \_\_\_\_\_

#### If you are currently using another cable carrier, please specify:\*

Model #: \_\_\_\_\_ Length/# of Links: \_\_\_\_\_

#### Contact information:

Date: \_\_\_\_\_ For Quotation Only: \_\_\_\_\_

Date Required: \_\_\_\_\_ Quantity: \_\_\_\_\_

Order Number: \_\_\_\_\_

Company Name: \_\_\_\_\_

Attention: \_\_\_\_\_

Address: \_\_\_\_\_

City: \_\_\_\_\_ State/Prov: \_\_\_\_\_

Country: \_\_\_\_\_

Zip/Postal Code: \_\_\_\_\_

Telephone: \_\_\_\_\_

Fax: \_\_\_\_\_

E-Mail: \_\_\_\_\_

**Please fax this completed form to the number listed below.**

\*More information may be required. A Gortrac representative may contact you.