



KOE1



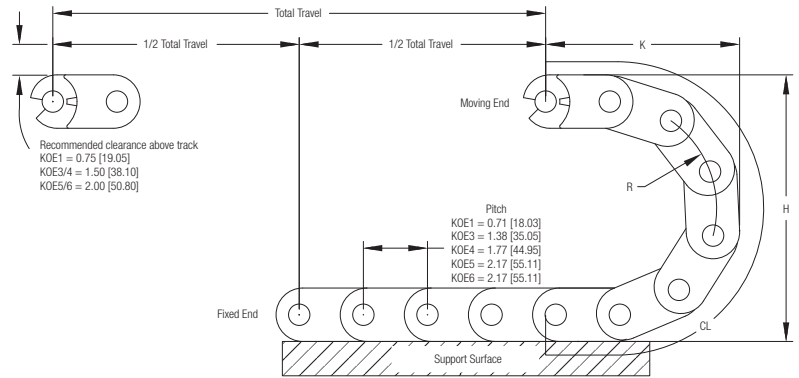
KOE5-10

The KOE Series

The KOE series is a small to medium size range of standard enclosed plastic carrier. Mounting holes are part of each link and the lids on the outer radius of the carrier can hinge open. The KOE series is excellent for robotics, light industrial and heavy chip load applications.

Specifications

Standard Mounting bracket arrangement pictured.
Please consult factory for alternative arrangements



Travel/2 + CL (+ Offset Distance From Center*) = Length

* Gortrac recommends mounting the stationary end of the carrier at the center of travel, minimizing the required length. In cases where center mounting is not possible, add the distance offset from center to the carrier length calculation.

Gortrac® Recommends:

- 10% Cable Clearance
- 20% Hose Clearance
- 60% Maximum Fill

How To Create A Part Number: Model # - Height - Length"

Sample Part #: **KOE1-30 -12"**

TSC Series Design Guide

Model#	A	B	C	D	Q	M	Weight
	INCHES/mm	INCHES/mm	INCHES/mm	INCHES/mm	INCHES/mm	INCHES/mm	#/ft./KG/m
KOE1	0.95/24.13	0.39/9.91	1.42/36.07	0.59/14.99	1.18/29.97	0.16/4.06	0.19/0.28
KOE3	1.34/34.04	0.83/21.08	1.97/50.04	1.18/29.97	1.60/40.64	0.19/4.83	0.44/0.65
KOE4	1.89/48.01	1.18/29.97	2.44/61.98	1.58/40.13	2.13/54.10	0.19/4.83	0.61/0.91
KOE5	1.89/48.01	1.50/38.10	2.56/65.02	1.97/50.04	2.17/55.12	0.23/5.84	0.87/1.29
KOE6	5.28/134.11	1.50/38.10	5.91/150.11	1.97/50.04	5.51/139.95	0.23/5.84	1.28/1.90

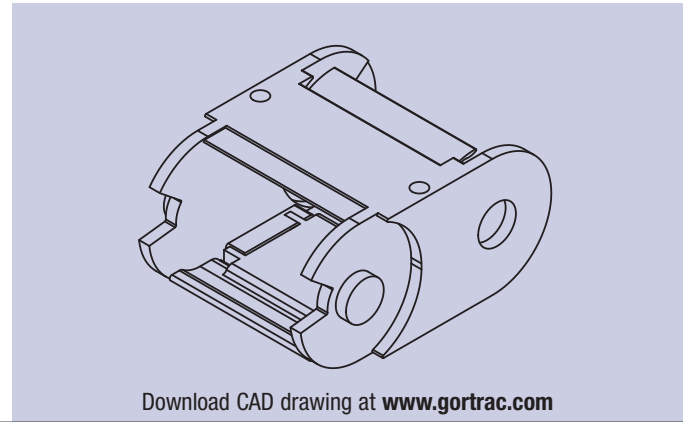
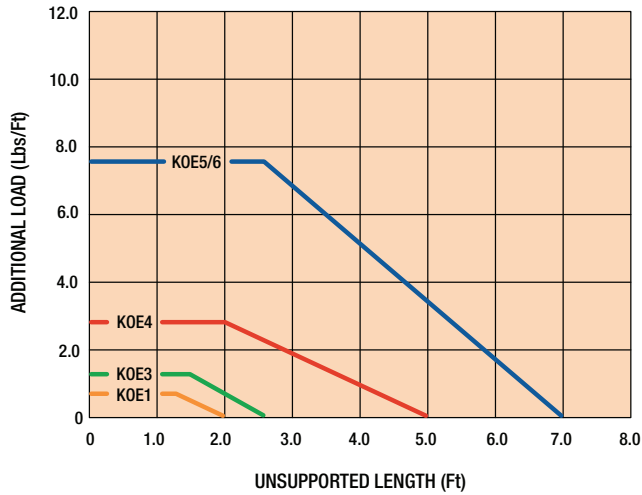
Height	R	H	K	CL
	INCHES/mm	INCHES/mm	INCHES/mm	INCHES/mm
KOE1 30	1.18/29.97	3.00/76.20	2.20/55.88	5.10/129.54
45	1.97/50.04	4.50/114.30	3.00/76.20	7.60/193.04
KOE3 60	2.36/59.94	5.90/149.86	3.80/96.52	10.20/259.08
90	2.95/74.93	9.10/231.14	4.90/124.46	12.00/304.80
130	3.94/100.08	13.00/330.20	5.90/149.86	15.10/383.54
KOE4 75	2.95/74.93	7.50/190.50	5.50/139.70	12.80/325.12
95	3.94/100.08	9.50/241.30	6.50/165.10	15.90/403.86
135	5.91/150.11	13.40/340.36	8.50/215.90	22.10/561.34
KOE5 10	3.94/100.08	9.90/251.46	7.10/180.34	16.70/424.18
14	5.91/150.11	13.80/350.52	9.10/231.14	22.90/581.66
KOE6 10	3.94/100.08	9.90/251.46	7.10/180.34	16.70/424.18
14	5.91/150.11	13.80/350.52	9.10/231.14	22.90/581.66

Plastic Crossbars

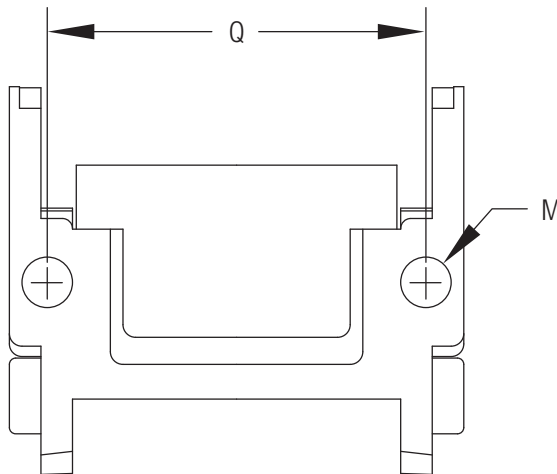
Plastic cross bars are a lightweight, easily-removable, low-cost option. Quick link cavity access is accomplished with the tip of a screw driver. Many models are available in either top and/or bottom link access. Also available as **Snap-In** (pictured, right) on some modular carriers.



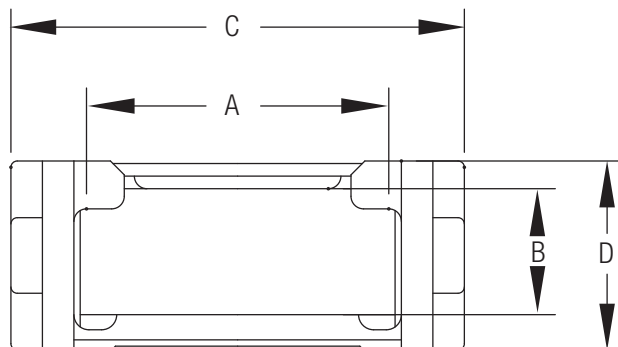
KOE SERIES LOAD CHART



Top View
Mounting Hole
Dimensions



Carrier Cross
Sectional View

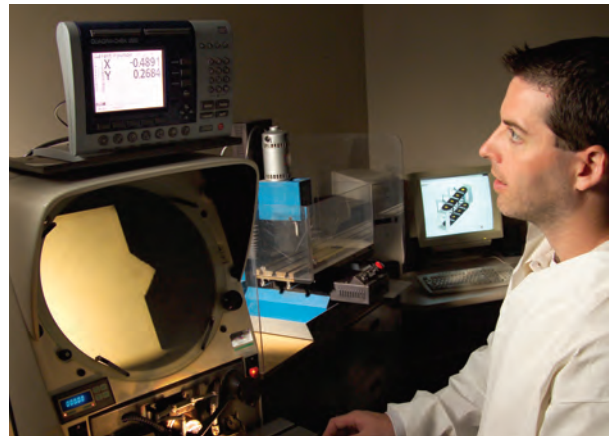




Research & Development

Gortrac constantly engages in research and development. Our goal is continuous improvement in carrier design and manufacturing. Gortrac engineers and technicians employ various tests and research methods to further their knowledge and expertise:

- Fatigue and life cycle testing
- Destructive testing
- Optical comparison of components
- Rapid prototyping
- Designs for special applications
- Materials research and improvement



How to Order

Travel/2 + Curve Length (+ Offset Distance From Center*) = Length

* Gortrac recommends mounting the stationary end of the carrier at the center of travel, minimizing the required length. In cases where center mounting is not possible, add the distance offset from center to the carrier length calculation.

Gortrac® Recommends: 10% Cable Clearance
20% Hose Clearance
60% Maximum Fill

How To Create A Part Number: Model - Height - Bar Width (PR & AF Style Bars only) - # of Separators - Length"

Sample Part #: **KLE1-10-1-36"**

1. Determine Gortrac cross section desired. Allow 10% clearance over OD's of enclosed cable and 20% over OD's of hoses to prevent binding.
2. Choose radius (Use manufacturer's suggested cable/hose radius).
3. Determine total track length. See the formula above. If fixed flange is not mounted in center of travel, please send a sketch or drawing.

If Gortrac Part Number is known:

Gortrac Part #: _____

Bracket Information (See Page 7 — Standard arrangement and orientation is 1 + IN)
Please check your **arrangement** and **orientation** selection below:

1 2 3 4 IN OUT

If carrier parameters are known:*

Carrier Radius Preferred: _____

Gortrac Model #: _____

Acceleration: _____ Feet/Sec.² Maximum Machine Travel Speed: _____ Feet/Sec.

Frequency of Travel: _____ Cycles/Hour Total Machine Travel: _____ Inches

Gortrac Length (see the formula above): _____

Cable/Hose Load: _____ Operating Temperature: _____ ° F

Environment: _____

If you are currently using another cable carrier, please specify:*

Model #: _____ Length/# of Links: _____

Contact information:

Date: _____ For Quotation Only: _____

Date Required: _____ Quantity: _____

Order Number: _____

Company Name: _____

Attention: _____

Address: _____

City: _____ State/Prov: _____

Country: _____

Zip/Postal Code: _____

Telephone: _____

Fax: _____

E-Mail: _____

Please fax this completed form to the number listed below.

*More information may be required. A Gortrac representative may contact you.